

Office Software



- Easy-to-Use Interface
- Supports Import/Export of Features in ESRI Shapefiles, ASCII, KML and GML Formats
- Supports Export of Point Cloud Data to ASCII and LAS Formats
- Multiple Coordinate System Support

SYSTEM REQUIREMENTS

CPU	Dual Core 2.1GHz or better
Graphics Card	NVIDIA GT9800 with 512MB dedicated VRAM or better (ATI and graphics cards with shared VRAM are not supported)
System RAM	4GB or higher
Hard Drive Space	75GB or higher
Operating System	Windows XP Professional x64 SP2 Windows XP Professional x32 SP3 Windows 7 32 & 64 bit.

For more specification information:
topconpositioning.com/spatialfactory

GIS Feature Extraction

Point, line and area features and attributes can be mapped and edited directly from the viewing screen and exported in shapefile (.shp) format or as an ASCII (.csv) file. Spatial Factory also supports the import and export of shapefiles including full attribution from existing geodatabases.



Topcon TotalCare

This online resource comes with real live people ready to help. Get expert training from Topcon University's large collection of online materials, and expert help directly from Topcon Technical Support.

Access software and firmware updates, current publications, and guidance from the experts at Topcon all right from your computer or mobile device.

Please visit the TotalCare website to learn more.
topcontotalcare.com



7400 National Drive • Livermore • CA 94550
 (925) 245-8300

Specifications subject to change without notice. ©2013 Topcon Corporation
 All rights reserved. P/N: 7010-2060 Rev. C TF Printed in U.S.A. 4/13

The Bluetooth® word mark and logos are registered trademarks owned by Bluetooth SIG, Inc. and any use of such marks by Topcon is under license. Other trademarks and trade names are those of their respective owners.

SOFTWARE OVERVIEW

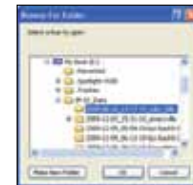
Spatial Factory Software

A 3D viewing, editing, and feature extraction software for 3D point cloud, trajectory and panoramic image data.

Spatial Factory software provides a simple interface for combining, viewing and working with your various sensor data from the IP-S2 3D Mobile Mapping System.

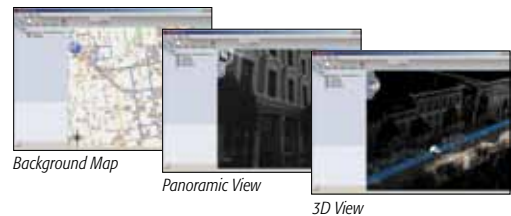
Simple Interface

Provides an easy process for loading trajectory, point cloud and panoramic images for collected IP-S2 data.



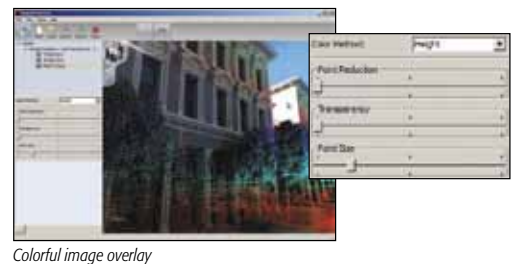
Multiple Views

Collected IP-S2 data can be viewed in a variety of ways either by viewing the data on a Background Map, in 3D, or in the Panoramic View.



Panoramic View

The Panoramic View allows the user to see the images overlaid with collected point cloud data to perform extraction of desired features. The user can easily adjust Point Reduction, Transparency and Point Size using slider bars for a customized view.



Take Measurements

Just click the Measure Tool on the tool bar to measure the distance between 2 points in the view. Get Slope Distance and various Point Details.



Your local Authorized Topcon dealer is: