

MD II

Digital Bluetooth® caliper for efficient field data collection



- Bluetooth caliper for efficient data capture.
- Communicates with PC, handhelds, SmartPhones, Tablets.
- Edit and input names for up to 100 different tree species.
- Classic menu icons for intuitive interpretation and use.
- Application available for PC communication with stand tables, lists and classifications.
- Custom SmartPhone app for in-field wireless data transfer.
- Rugged, dependable and completely field adapted with patented and certified technology.
- Moisture and dirt protected electronics and display.
- Designed to improve accuracy and add value to investments in corporate management systems and field computers.
- Haglöf Sweden® Quality Craftsmanship - experience and know-how in every detail.

The MD II is a modern caliper hybrid, for efficient field data collection and wireless communication with Bluetooth® technology.

The MD II caliper is designed for speedy collection and safe storage of tree data such as diameter, species and height.

Thousands of tree diameters can be stored in the non-volatile caliper memory. Data can also be transferred with built-in Bluetooth® to handheld computers, and Android mobiles or tablets - or use the MD II caliper as a virtual keyboard to send wireless data to spreadsheets, e-mail or SMS.

For convenient download of your field data to your office PC, the ruggedized MD II computer terminal can be detached from the measuring scale and connected with USB communication cable.

To get even more out of your from your MD II caliper, work with the MD II Com PC software to smoothly manage your field data in your PC.

The MD II caliper is designed for easy learning and simple use, regardless of your previous experience or measuring standards, language or forest type.



Data can be stored in the non-volatile memory in the MD II or transferred with Bluetooth® to the MD II Com App for Android. Data is saved in XML format and can be shared over email, Google Drive, Dropbox or other. Heights can be measured with VLS or Vertex instruments and transferred to MD II with built-in IR.

Art no 14-430-3001--3006 MD II digital caliper in selected length/graduation (500mm, 600mm, 650mm; 800mm, 950mm, 1000mm; 18", 24", 30", 36"). Aluminum safety case, USB cable, USB adapter, USB car adapter.

Art no 14-101-1007 MD II Com PC Communication program for PC.
MD II Com App for tablet/SmartPhone: Download from Google® Play.

MD II



Memory capacity:	>10 000 registers
Processor:	Low power 32 bit Arm based processor.
Temperature:	Min -20° Max 60°C / Min -4° Max 140° F.
Battery:	Battery: Rechargeable Li-ion (1ea terminal +1 ea SmartScale, USB-interface charge. Consumption: One week/charge.
Buttons:	Execution Enter + Enter on SmartScale handle Navigation 4 arrow keys. Quick commands: Display light Turn off, Escape and Vertex/VLS height input.
Measuring system:	500mm; 600mm, 650mm; 800mm; 950mm; 1000mm. 18"; 24"; 30"; 36".
Measuring range:	From 500mm/18" to 1000mm/36" (standard).
Weight:	Caliper and terminal: <1kg/2.20 lbs (500mm/18" standard). MD II Terminal only: 150g/6oz.
Display:	Graphic, 128 x 64 pixels backlit, graphic interface.
Communication:	USB 2.0 MSD; Bluetooth® (SPP, OPP) Keyboard, Vertex/VLS IR receiver
Signal:	Built-in loudspeaker.
Classification:	P67 Moist/dust resistant, CE, FCC, IC

Working with the MD II

Intuitive use and your preferred tree species

The MD II Caliper has a secure memory with room for thousands of captured tree diameters and heights. Name up to 100 individual tree species in a simple textfile on your PC or straight in the MD II caliper. Use up to seven Roman letters to name each of your species. When in the forest, select your species for the particular tree and measure and register its diameter with the MD II caliper. Complete your data input with a height measurement result from the Vertex IV or VL5 instrument, that you transfer to the MD II memory with IR.

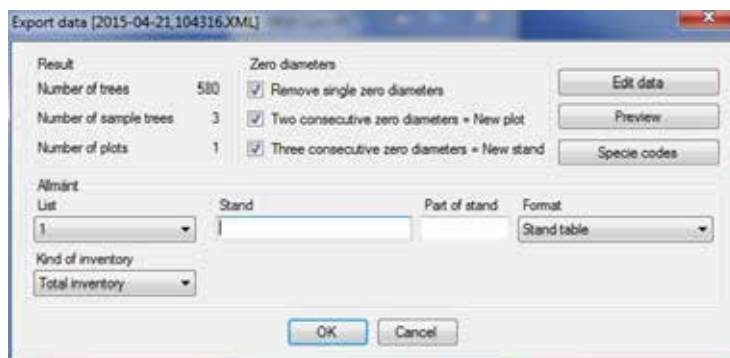
The MD II Com App is a free application for mobile phones or tablets to transfer field data from the MD II caliper to your Bluetooth® Android device. Your data is saved in XML-file format and can be shared via email, Google Drive, Dropbox, etc. You can also synchronize your Bluetooth device with your office PC to make your collected field data available to colleagues in real time.

A list of tree species, assorted by name and with diameter, and tree heights if input, is featured. Apply a simple form factor function for volume on your stands, as for the diameter assortment and a height curve. To start a new plot, use the MD Com App and press yes for "New Plot?"

For even better functionality, work with the MD II Com PC program. In the MD II Com PC program, more tree data can be added and processing and reporting capacities are enhanced.



MD II can communicate with different types and brands of Bluetooth® computers, Android smartphones and tablets.



The MD II Com app works with Android Smartphones and tablets. Download free from Google Play.



The MD II Com PC communication program from Haglöf Sweden® offers extended processing and reporting capacity for your field data. Name of tree species, cruising method and data interpretation from the MD II caliper are defined in MD II Com.

Field data can be added to an object, and complete cruising or sample plot survey can be selected. Data can be exported to Excel as a tab-separated txt-file or printed out as a list of trees in 1-, 2- or 4-cm classes with sample trees and plot data.



Efficient fieldwork with the MD II caliper used to measure and register tree diameters with direct transfer of results to handheld computer for extended data storing and processing capacities.